

A rewarding collaboration

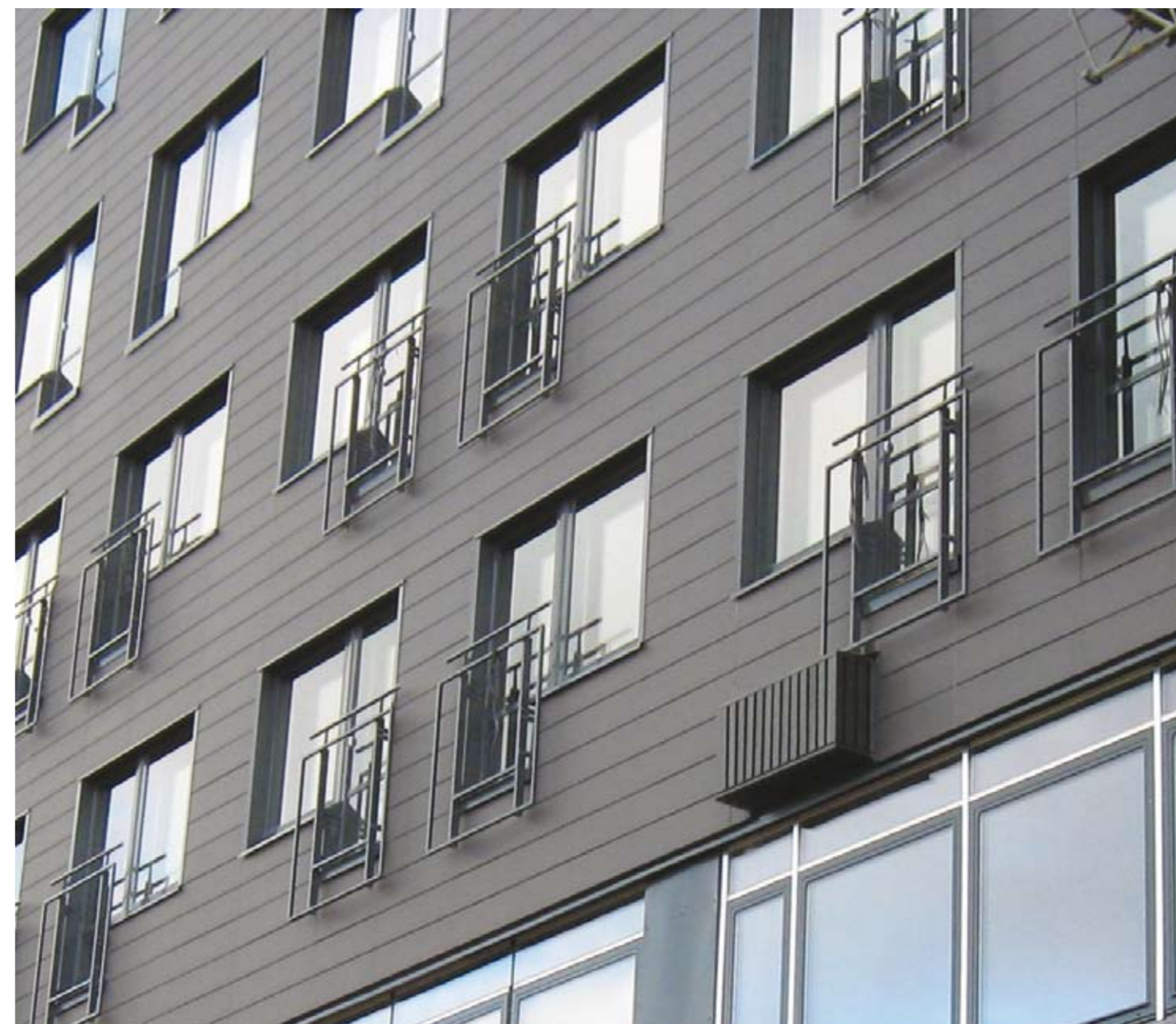
The collaboration between architect, contractor and supplier worked out optimally - Arkkitehtitoimisto Ari Mäki-Marttunen OY provided the creative input, YIT Rakennus Oy was responsible for assembly, and ivarsson delivered materials on time. YIT chose Tonality because it is a simple system that is quick and easy to install. The documentation was clear and contained precisely positioned module measurements, thus producing minimal waste.

The efficient installation and minimal waste secured YIT a good project economy. YIT also accepted the support offer from ivarsson regarding measurement and start of assembly.

Simple maintenance

The flexible assembly system and Tonality's many opportunities, for example edging, was a major contributing factor in selecting Tonality for the Levi North Star Hotel.

The mounting system facilitates an easy facade repair as each facade tile can be replaced without damaging the remaining tiles. Maintenance of Tonality is minimum as the tiles are dirt resistant and comes with integrated anti-graffiti surface protection. Graffiti tags may simply be 'wiped off' the facade. The Tonality facade tiles provide an exclusive look to the Levi North Star Hotel with stringent lines and joining details that stand out.



Modern and functional building

– with Tonality facade cladding



Cold nights are no problem as Tonality absorbs very little water.



Tonality can be adapted perfectly to the window

Learn more...

Visit our website
www.ivarssonsverige.se
 for additional information.

Please contact Geert Jacobsen
 at gmj@ivarsson.dk for correspondence in English.

- Simple fixing system (ADS-System)
- Low water absorption (3%)
- Dirt resistant and easy maintenance

ivarsson a/s, Kometvej 36, DK-6230 Røddekro
 T 73 66 19 99, F 74 66 10 20, www.ivarsson.dk



Levi North Start Hotel building site

A complete expression with Tonality facade cladding



Located on a hill among trees, the colour selection for the hotel was clear right from the start; earth colours. We chose the combination of natural stone and Tonality. Having completed the project, it is now evident that this combination is exactly right.

The building has already been

taken into use and as shown in the pictures, the hotel's location is characterised as being very cold, snowy and icy.

Tonality was therefore the obvious choice due to its low water absorption and the risk of frost damage is non-existent.



When shape is important

Straight, clean facade lines, tight styling and detailing; Tonality is the obvious choice. Made from the finest raw materials, Tonality with its wide variety of surfaces and colours offers ample possibilities for creating an architectural expression that matches your facade wishes and requirements to perfection.

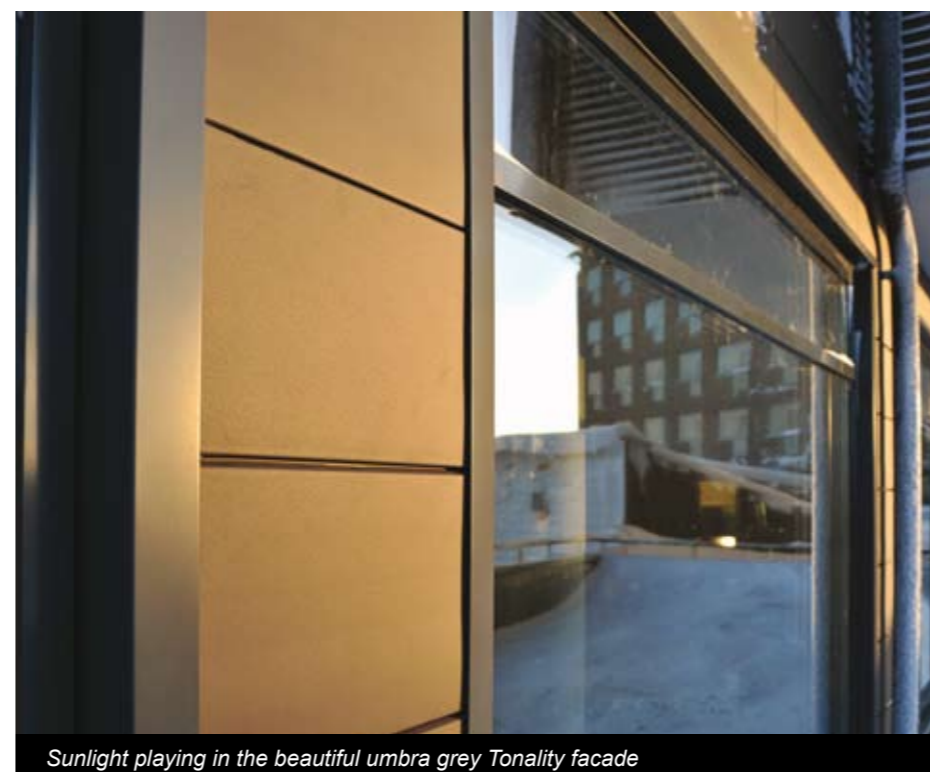
Tonality mixes perfectly with glass facades as well as with other materials. Exciting contrasts and colour combinations make the building stand out and match the architecture and the desired ambiance.

Ari Mäki-Marttunen, the architect behind the new Lapland hotel, saw interesting and special opportunities in the combination of natural stone and Tonality. It was important to use a wide colour palette, and in addition there was a need for great flexibility in terms of cutting / horizontal cutting.

The umbra grey Tonality facade tiles work really well with the other materials used in the construction such as natural stone and glass.

3000 m2 Tonality tiles were used for the construction which

were fitted by means of the user-friendly ADS system. Moreover, very little waste was produced during construction as the tiles were adjusted to the format and design of the construction.



Sunlight playing in the beautiful umbra grey Tonality facade

